



Gausium SC50 Pro

Working smarter and easier with
Gausium service robots

Saxon
Solution Manager



Contents



1. Basic Information
2. Applicable Scenarios
3. Software and cloud platform
4. Accessories (Charging dock & Workstation)
5. Product Advantages and Values
6. Demos
7. Success case

Contents



1. Basic Information
2. Applicable Scenarios
3. Software and cloud platform
4. Accessories (Charging dock & Workstation)
5. Product Advantages and Values
6. Demos
7. Success case



Basic Information – Two Versions of SC50 Pro



- The two versions of SC50 Pro are on sale for overseas market.



SC50 Pro (V4.1)
Disc Brush Version



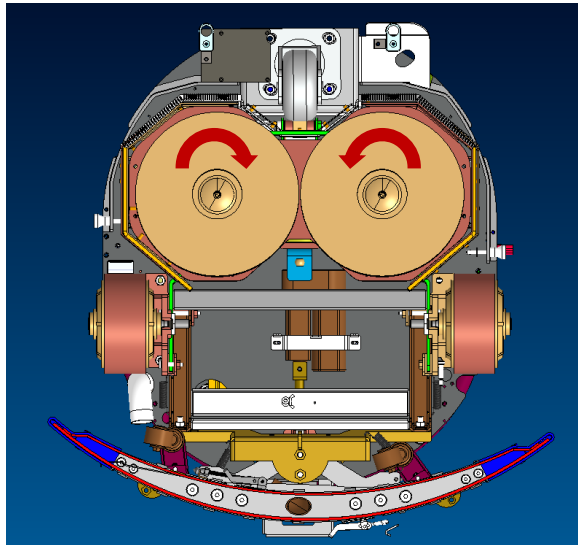
SC50 Pro (V4.1)
Roller Brush Version



Basic Information – Two Versions of SC50 Pro

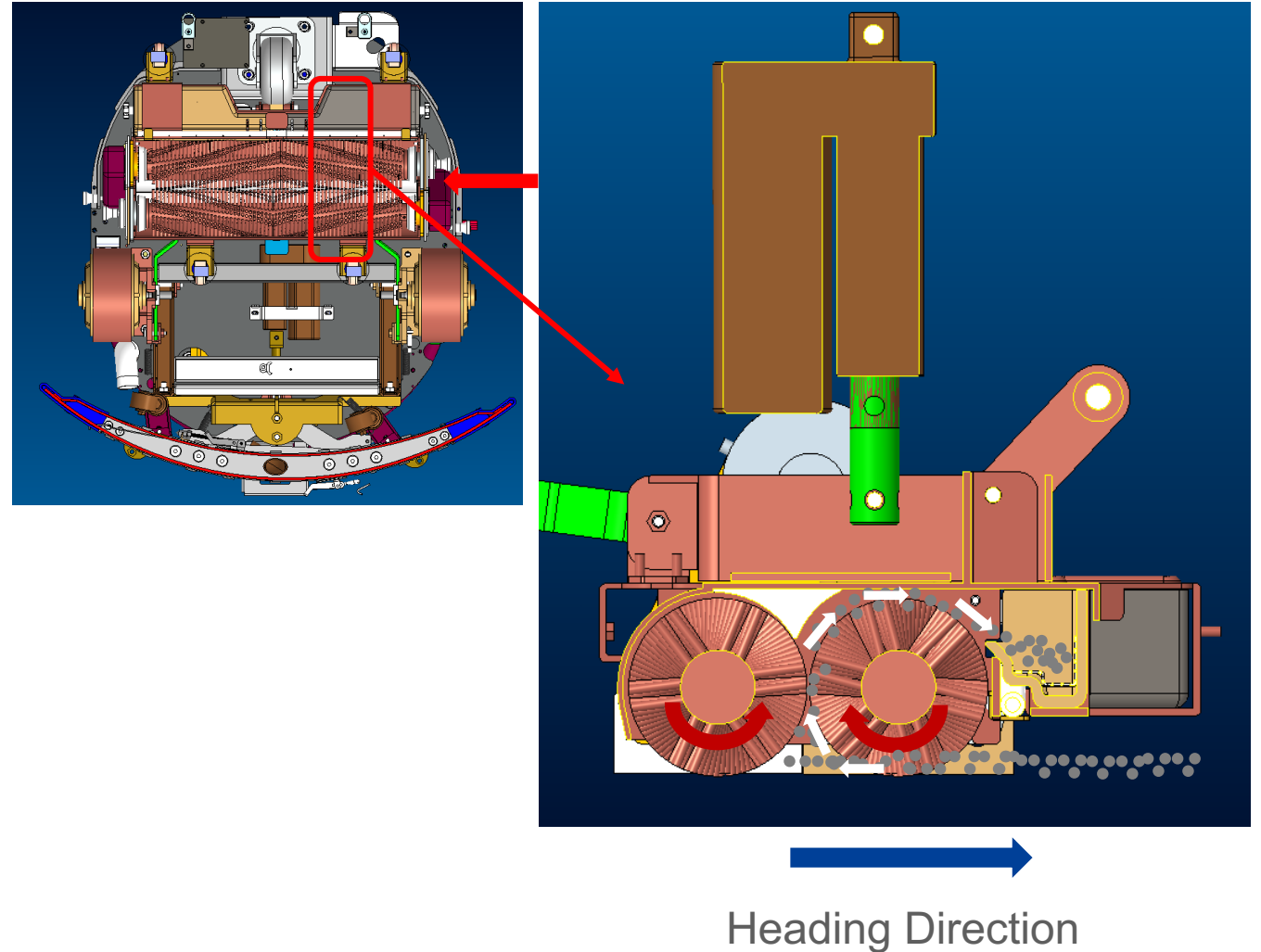


Disc brush version



↑
Heading
Direction

Roller brush version

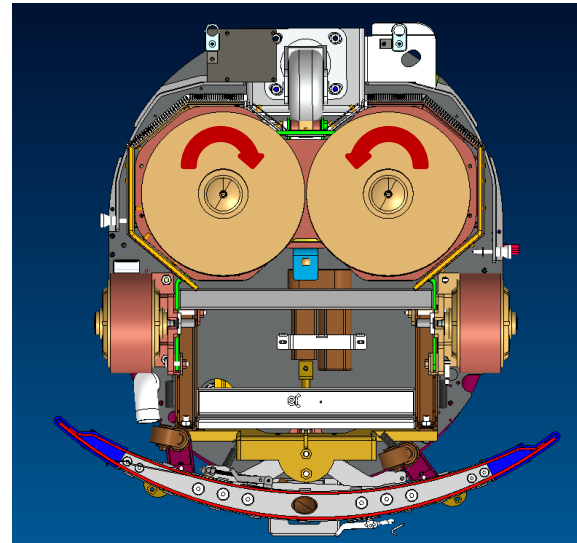




Basic Information - Working Principle of Scrubbing



Disc brush version



Working process: Two disc brushes would rotate inwards to scrub the floor with the help of water.

Applicable scenarios: Factory, warehouse, hospital, buildings (lobby), etc.

Pros: Cleaning efficiency would be relatively higher on flat surface.



Basic Information - Working Principle of Scrubbing



Roller brush version

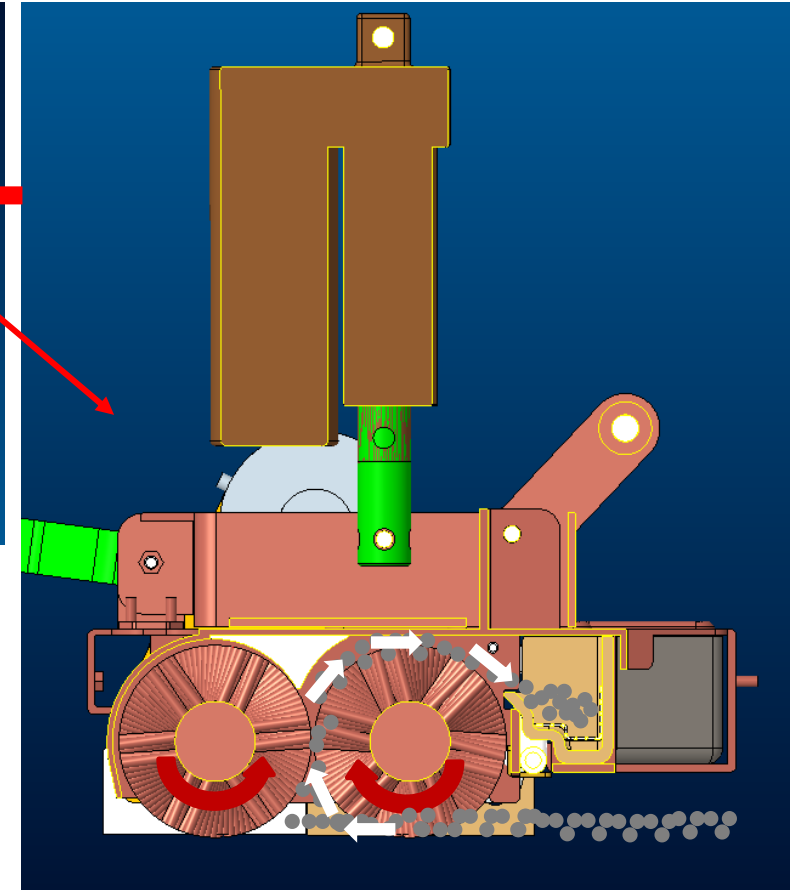
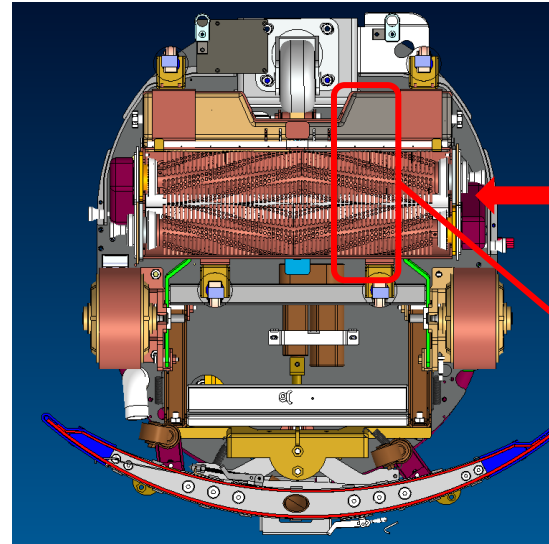
1. Scrubbing: Two roller brushes would rotate to scrub the floor with the help of water.

2. Sweeping: Two roller brushes would rotate inwards to throw up trashes on the floor and move them into the trash tray.

3. Trash type: Toothpicks, cigarettes, peanuts could be swept away. While fresh food, cards can not be swept away.

4. Applicable scenarios: Supermarkets, commercial complex, schools, etc.

5. Pros: Able to sweep away certain types of trashes to prevent suction hose from getting clogged. You could also use cloth roller to do dust mopping.



Heading Direction

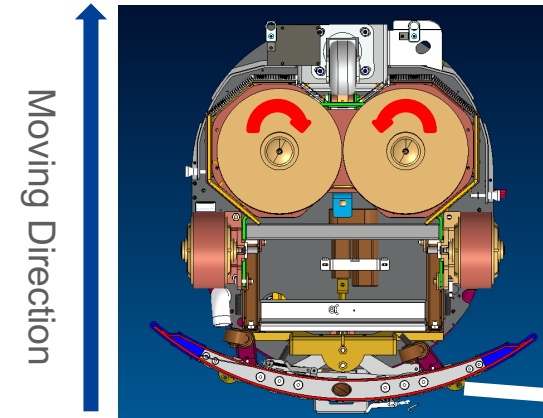
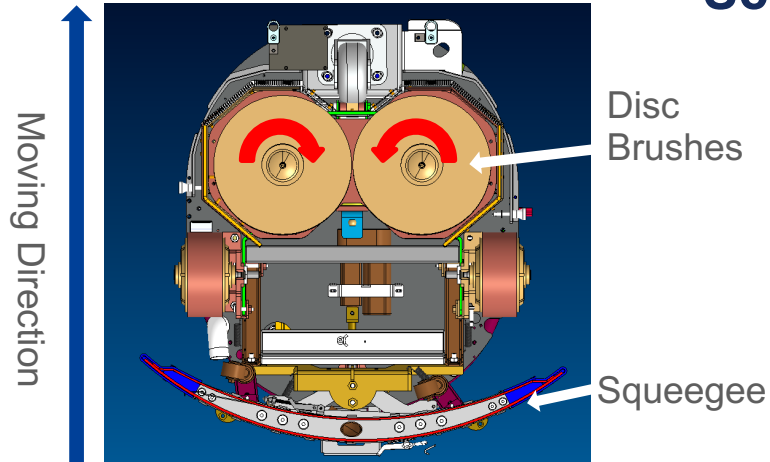


Basic Information - Working Principle of Mopping



Disc Brush Version

Scrubbing

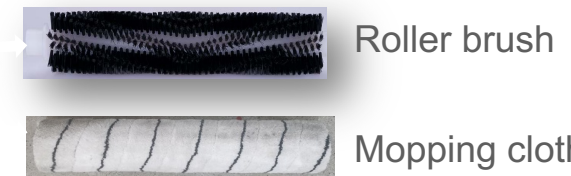
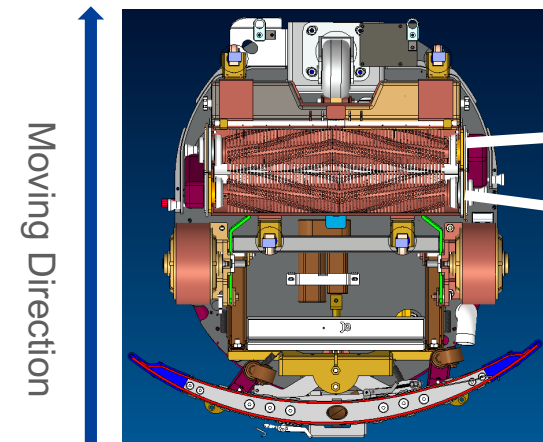
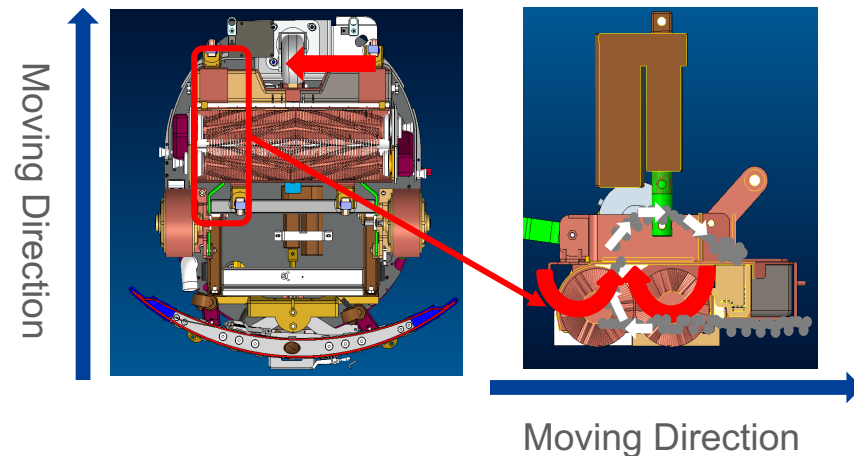


Mopping



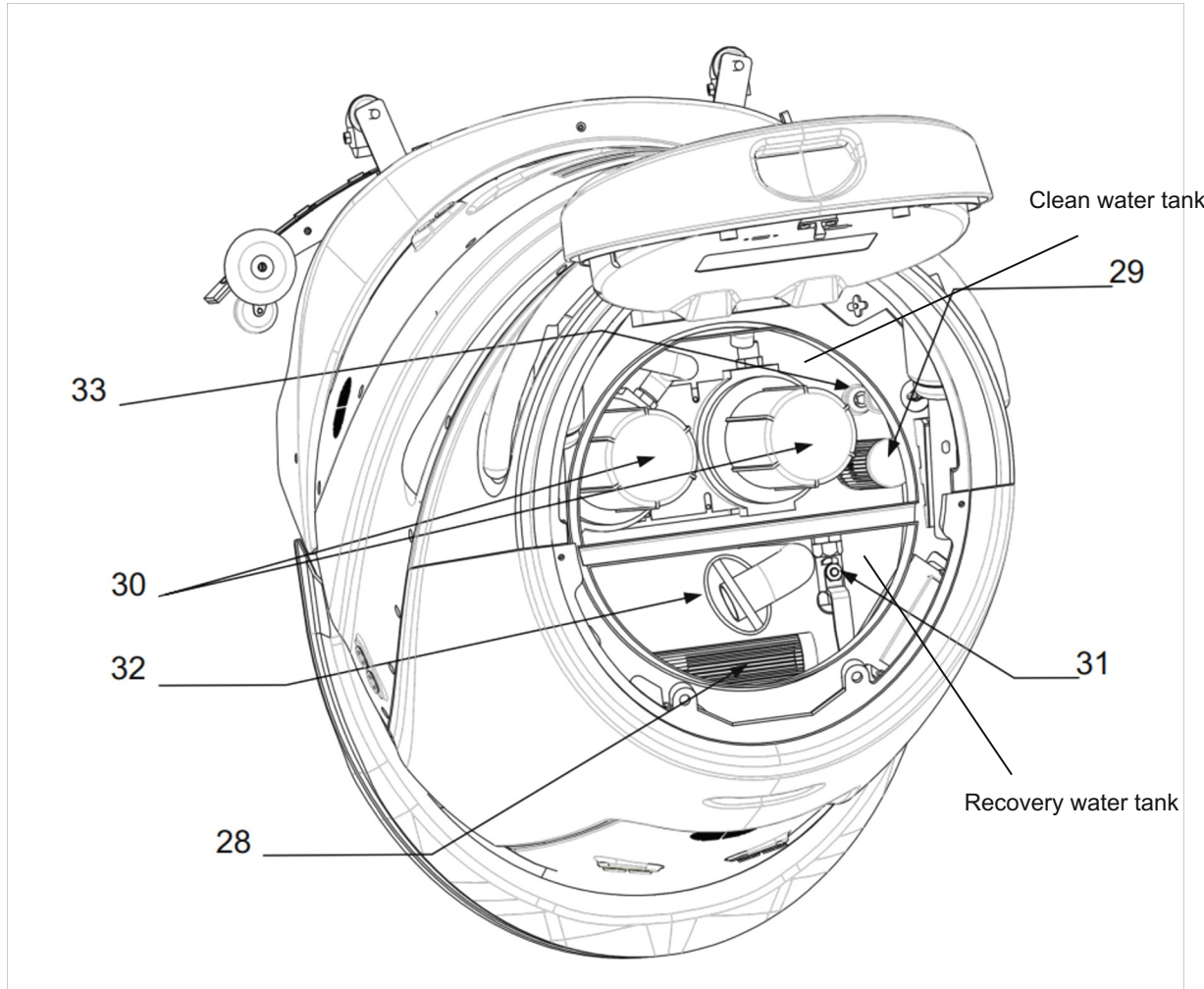
Squeegee + Dry mopping cloth

Roller Brush Version





Basic Information - Filtration System



| | | | |
|----|-------------------------------------|---|---|
| 28 | Sewage Cylindrical Mesh Filter | 1 | It is located at the middle of the recovery tank, functioning as the second-stage filtration. |
| 29 | Clean Water Cylindrical Mesh Filter | 1 | It is located on the right side of the clean water tank. |
| 30 | Filter | 2 | There are three filters in the fresh water tank, which constitute a complete 2-stage filtration circulation system, namely, the third-stage filtration and fourth-stage filtration. |
| 31 | Valve | 1 | It is the connection switch between the fresh water tank and recovery tank. Once turned on, water in the clean water tank will automatically flow into the sewage tank and then be discharged through the sewage pipe all together. |
| 32 | Filter Bag | 1 | At the suction hose in the recovery tank, there is a dirt sieve. It is mainly used for filtering sand, stone and other solid garbage. |
| 33 | Water Level Sensor | 2 | It is located on both clean water tank and recovery tank and is used to measure the water level of the clean water tank. |

Water flow: 32 □ 28 □ 30 □ 29



Basic Information - Sensor



Feature Highlight - Sensor



Upgrade of Sensor

- Front oblique depth camera: bigger FOV, improving the accuracy of detecting escalator, stairs, etc.
- The back line LiDAR is equipped: improving the accuracy and stability of docking
- Rear RGB camera: improving the ability of detecting obstacles at the back, to ensure more efficient and smoother obstacle avoidance
- Front RGB camera: used for spot cleaning*, improving cleaning efficiency in an intelligent way
- Left & right camera: they are moved from top to the bottom, facing up, to detect hanging obstacles more accurately

* Now, auto spot cleaning function is only applicable to sweeping mode for roller brush version SC50 Pro, and scrubbing mode will be available for both roller brush and disc brush version of SC50 Pro in Q1, 2024.



Basic Information - Modules





Basic Information - Modules



Bumper sensor

Where to maintain
magnetic disc brush

Upgrade of the Bumper sensor

- Fixed design, no need to disassemble during daily maintenance, meaning it will not easily fall off
- Maintenance can be done with quick access via the maintenance cover on both sides

Feature Highlight - Module



Upgrade of modules

- Manual / Auto switch & Lock Screen & Tank indicators are all removed from the panel
- The key switch is moved to the back, easier to switch on or off when people pushing at the back

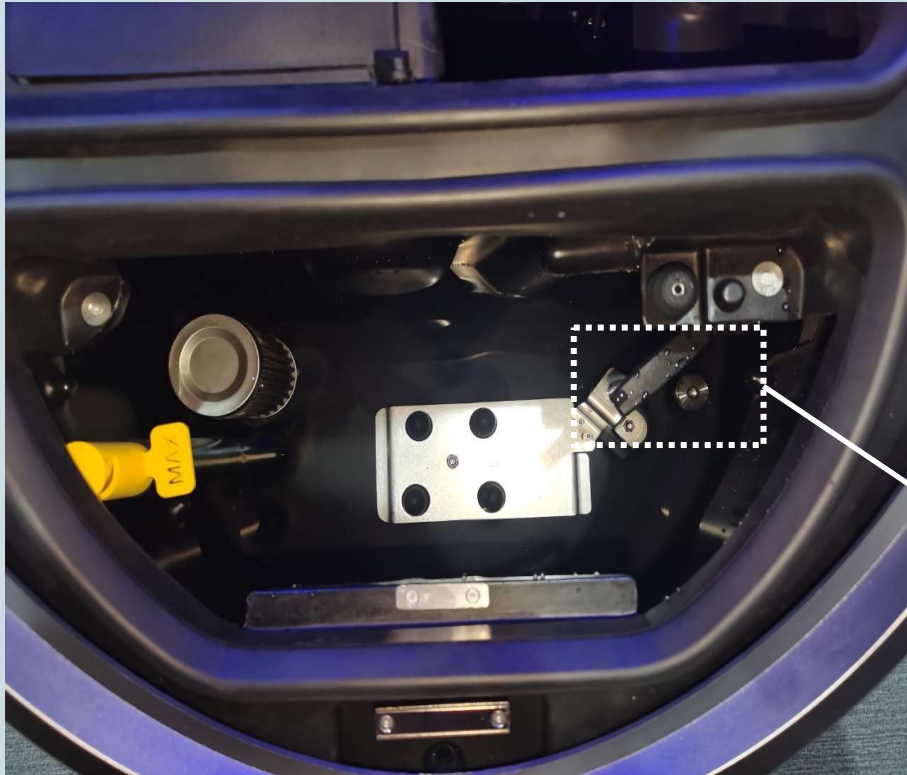
Feature Highlight – Water Tanks



Upgrade of Water Tanks

- The material of water tank is more stable, bigger capacity (30L of clean water tank and 24L of dirty water tank), decreasing the frequency of robot going back to workstation to refill or discharge water.
- The dust bag becomes stainless dust sieve, easier to clean.
- Additional module (rubber cover) to prevent suction motor from water, less possibility of pouring water to the motor when adding clean water.

Feature Highlight – Plug



Plug for clean water tank

- No need to reach the bottom of the water tank to pull the plug, but simply pull out the stick on the plug, easier to drain the clean water.



Feature Highlight – Roller Brush



Roller Brush Module

- The two small shells on both sides can be easily opened, to replace the roller brush, less maintenance time needed (less than 30s).
- Front shell: easier to dismount, magnetic design.

Feature Highlight – Hinge



Upgrade of Hinge

- The lid can be opened with a boost, easier to open

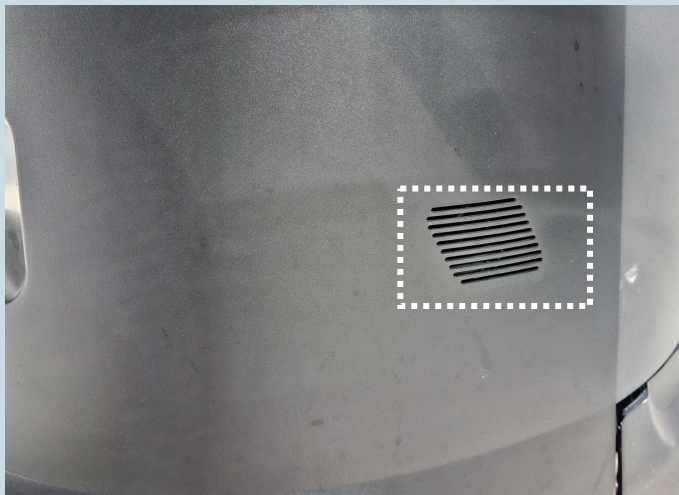
Feature Highlight – Pedal



Upgrade of Pedal

- The pedal is foldable, easier to put it down when pushing the robot to go over some small bumps.

Feature Highlight – Speaker



Upgrade of Speaker

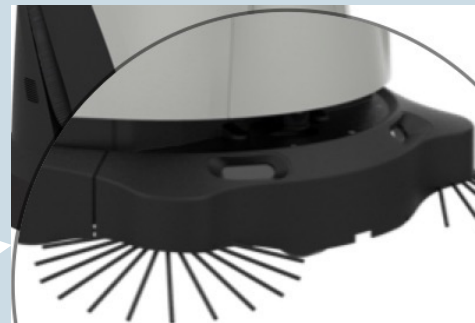
- The speaker is moved to the lower part, wider range, clearer voice to warn pedestrians around.

Feature Highlight – Side Brush



Side brush is available for roller brush version

- The side brush can sweep garbage at corners, more cleaning width, easier to dismount and maintain with magnetic design (about 10s to replace).



Feature Highlight – Detergent Box



Detergent box

- We can add detergent to a specific box, then mixed with water by software configuration, to clean something like oil stains, spilled milk or coffee.

Features & Functions – Scrubber 50 Pro (V4.1)



400-800 sqm/h (Actual Efficiency)

Up to 2000+ sqm coverage on a single charge (800*3)



Sensor

Brand new sensor layout, safer and smarter



0-4 CM EDGE

Roller brush version with side brushes can reach edges without clearance (close to the wall)



Compatible with V1.2 workstation



Compatible with V2.0 workstation (new, released in July 2023)

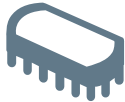
Magnetic Design

Magnetic design for disc brush, side brush and front shell, easier to dismount



Roller & Disc Brush

Roller brush and disc brush are optional



60Ah Battery

Big capacity battery to ensure enough cleaning time



MARBLE



TERRAZZO



PLASTIC FLOORING



CERAMIC



EPOXY



CEMENT

Parameter Comparison – V3.7 VS V4.1



| ITEM | | V3.7 | | V4.1 | |
|--------------------|---|--|---|--------------------|---|
| | | Disc Brush Version | Roller Brush Version | Disc Brush Version | Roller Brush Version |
| General Info | L*W*H(mm) | 860*700*1030mm | | 810*700*1070 | |
| Scrubbing | Cleaning Width of Robot | 460mm | 406mm | 460mm | 406mm (roller brush) 780mm (with side brush) |
| | Clean/Recovery Water Tank Capacity | 24L / 18L | | 30L / 24L | |
| | Theoretical Max. Cleaning Efficiency (cleaning width * max. cleaning speed * 3600s/h) | 1490 sqm/h | 1315 sqm/h | 1490 sqm/h | 1315 sqm/h (roller brush) 2527 sqm/h (with side brush) |
| | Filtration System | 5-stage (Filter bag>Sewage Filter Steel Cartridge>100-micron filter->50-micron filter>Clean water filter cartridge) | | | |
| | Brush pressure | 25kg | 18kg | 25kg | 18kg |
| Sweeping | Trash tray (L) | / | 2*0.6L | / | 2*0.6L |
| | Supported/Not supported trash type | / | Supported: toothpick, Cigarette Not supported: Fresh food, Cards | / | Supported: toothpick, Cigarette Not supported: Fresh food, Cards |
| Maneuverability | Max. Cleaning Speed | 0.9m/s (1m/s for transportation) | | | |
| | Min. Passing Width (transportation) | 900mm | | | |
| | Min. Turning Width (transportation) | 1200mm | | | |
| | Min. Running distance from the wall | 50-100mm | | 40mm | 0mm |
| Electric Parameter | Battery Life | 3h (Scrubbing, 60Ah battery) | | | |
| | Charging Time | 2h (Scrubbing, 60Ah battery) | | | |

For more parameters, please check the spec document

Features Comparison – V3.7 VS V4.1



| ITEM | | SC50 Pro (V3.7) | | SC50 Pro (V4.1) | |
|---------|---|---|---|---|----------------------|
| | | Disc Brush Version | Roller Brush Version | Disc Brush Version | Roller Brush Version |
| Sensor | Front head-up depth camera | Yes | | | |
| | Front oblique depth camera | Yes | | | |
| | Front RGB camera | Yes | | | |
| | Rear head-up depth camera | Yes | | No | |
| | Rear head-up line LiDAR | No | | Yes | |
| | Front RGB camera | Yes | | Yes | |
| | Rear RGB camera | No | | Yes | |
| | Left camera | Yes (facing down from top) | | Yes (facing up from bottom) | |
| | Right camera | Yes (facing down from top) | | Yes (facing up from bottom) | |
| | 2D Lidar | Yes | | | |
| | TOF Camera | Yes | | No | |
| Others | Side brush | No | | No | Yes |
| | Charger | Yes | | | |
| | Charging dock | Optional | | | |
| | Workstation | Optional | | | |
| | Big Capacity Battery (60Ah) | Yes | | | |
| Picture |  |  |  |  | |

Contents



1. Basic Information
2. Applicable Scenarios
3. Software and cloud platform
4. Accessories (Charging dock & Workstation)
5. Product Advantages and Values
6. Demos
7. Success case



Applicable Scenario Types



Shopping Center



Hotel & Office Building



Supermarket

SC50 Pro is applicable to clean scenarios like shopping malls, hotels, office buildings (lobby), supermarkets. And train stations, hospitals, schools, exhibition halls or factories.



Applicable Flooring Types



PVC & Vinyl



**Artificial marble
/ Granite**



Epoxy



**Concrete /
Cement**



Ceramic



Natural Stone

Scrubber 50 Pro can be applied for floorings types like natural stone, artificial marble, granite, ceramic, PVC, vinyl, epoxy, concrete/cement, tile, terrazzo, plastic floorings, etc.



NOT Applicable Scenario Types

01

Sauna / shower room

The robot is not water-proof



02

Clean room

The robot can not meet high cleanliness standard



03

Tire production factory

The robot can not see black objects



04

Semi-outdoor environment

The robot is not dust-proof



- The robot is not waterproof or dustproof
- The clean rooms typically maintain rigorous cleanliness standards that robots cannot match.
- The black objects with high reflection, hanging black objects, or glass door, might not be detected by the robot by camera
- The robot may easily get lost when working at highly dynamic environment, like warehouse (many pallets would be moved from one place to another).



NOT Applicable Scenario Types

01

Parking lot

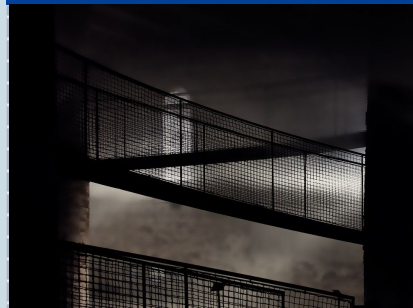
Robot does not have millimeter-wave radar to detect cars



02

Steep slope

Robot can not climb slopes of more than 8% (4.6 degrees)



03

Anti-explosion required

The robot is not anti-explosive



04

Open area

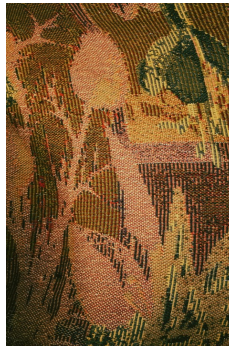
The robot will be lost if there is nothing within 25m



- SC50 Pro might not be able to detect cars from a far distance since it is not equipped with millimeter-wave radar like SC75 P.
- The flourmill or gas station may require anti-explosion standard since they have explosive particles, where robots can not be applied.
- The robot might easily get lost if there is nothing objects within 25m for reference, like too open area.



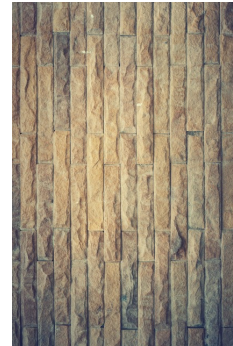
NOT Applicable Flooring Types



Carpet



Volcanics



Paving



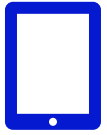
Rough concrete floor

Scrubber 50 Pro can NOT be applied in carpet flooring, volcanics flooring (water would leak into it), paving flooring (water suction would be bad), rough concrete flooring, tactile paving, floor light (more than 2mm high).

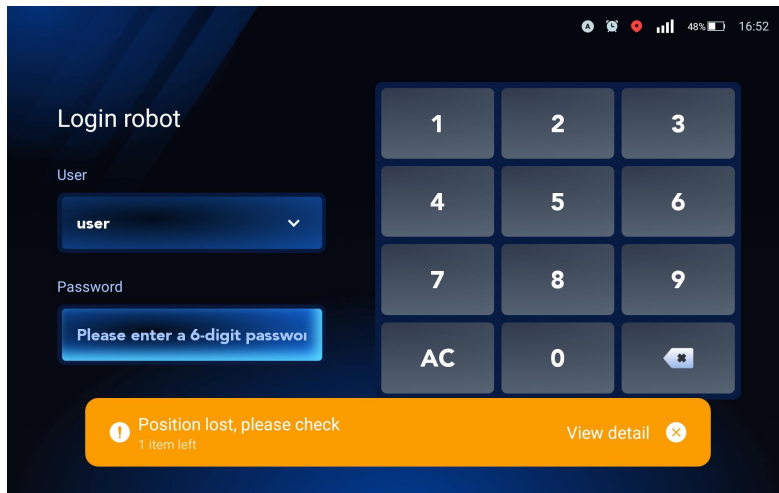
Contents



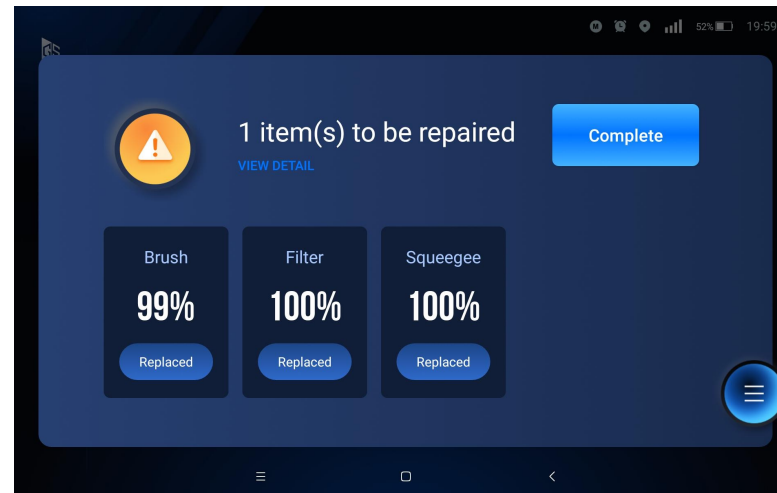
1. Basic Information
2. Applicable Scenarios
3. Software and cloud platform
4. Accessories (Charging dock & Workstation)
5. Product Advantages and Values
6. Demos
7. Success case



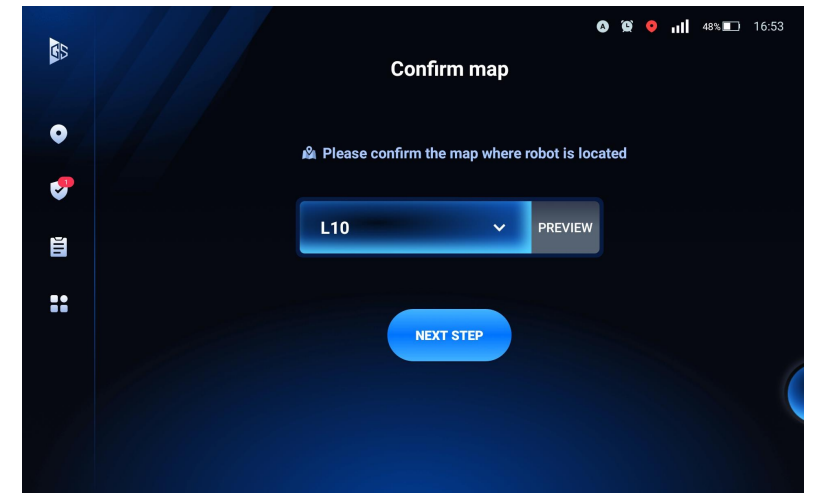
Built-in GMIND APP Introduction



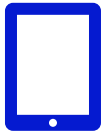
Separate accounts for **different permissions** (user & admin)



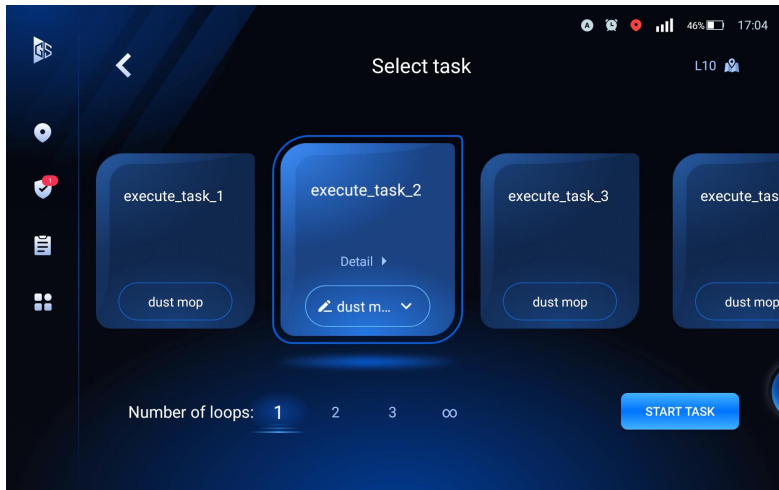
The **health status** of robot can be viewed at a glance.



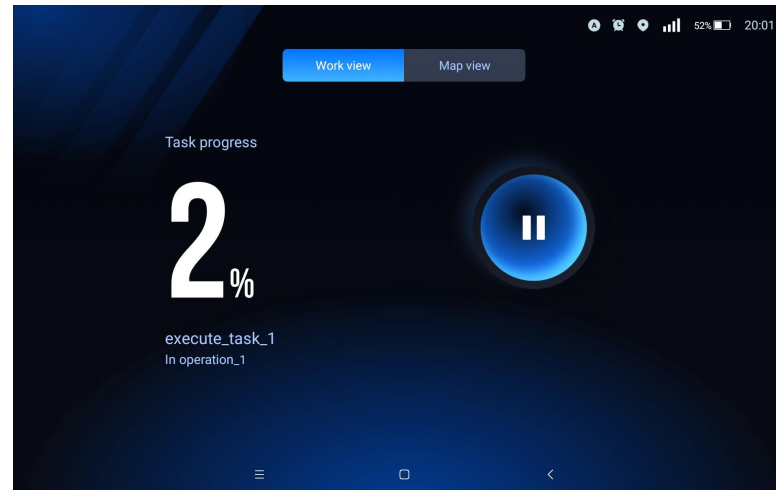
Select, preview or confirm your maps easily.



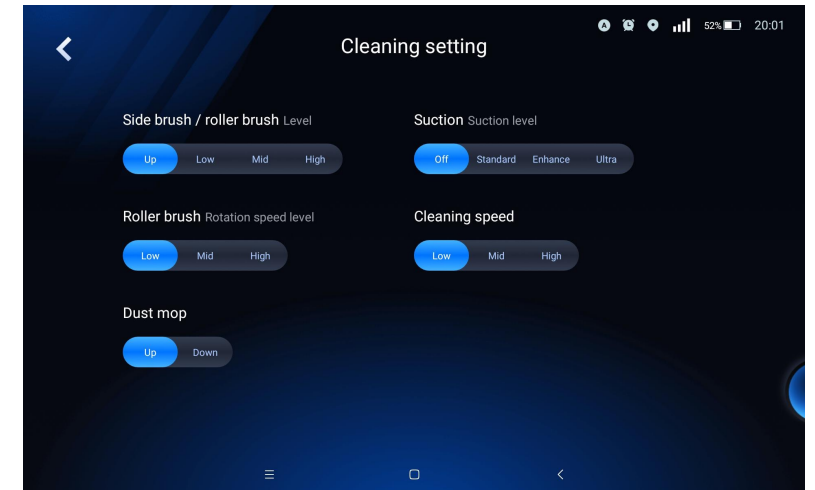
Built-in GMIND APP Introduction



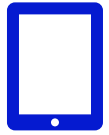
Clear UI for you to **select your task**, **cleaning mode** and **number of loops**, easy to start.



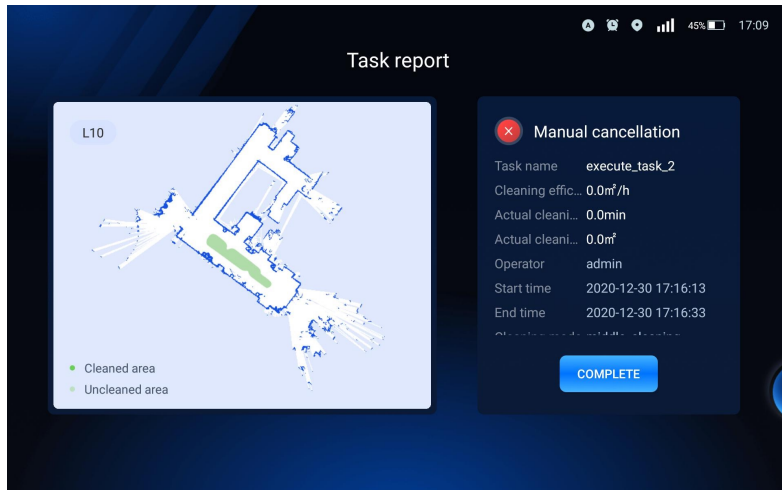
Clear UI for you to **check out the progress of cleaning tasks**, you can easily pause, continue or end task.



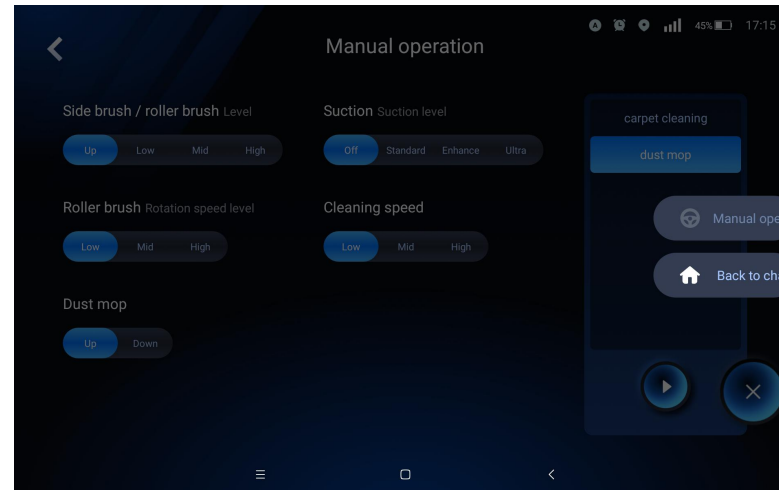
Easy to **adjust cleaning parameters** by selecting different levels for different equipment.



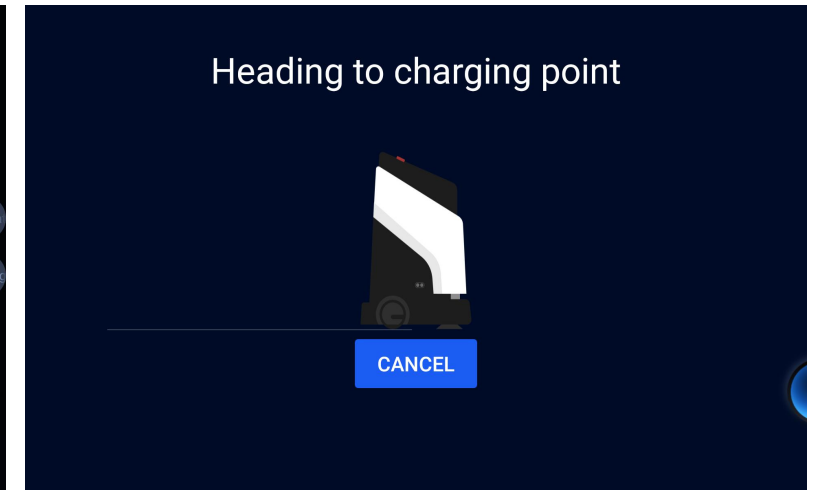
Built-in GMIND APP Introduction



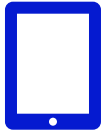
After the task is finished, this interface can show you all the details about the task (task report).



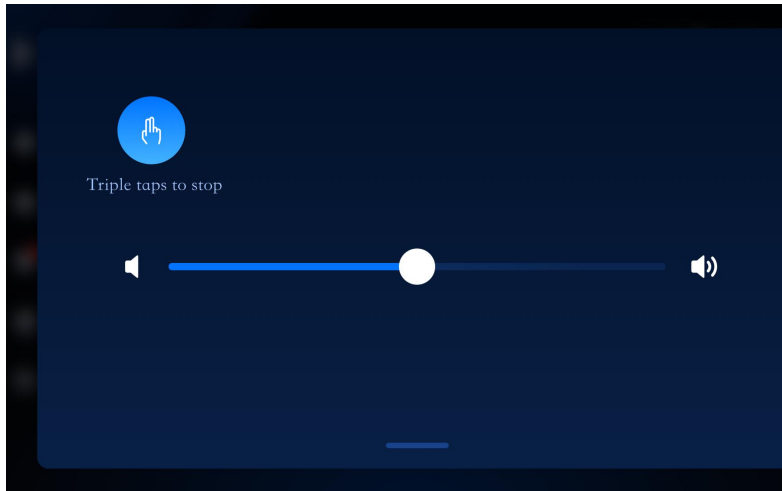
You can also tap the floating ball on the side to switch to manual operation mode.



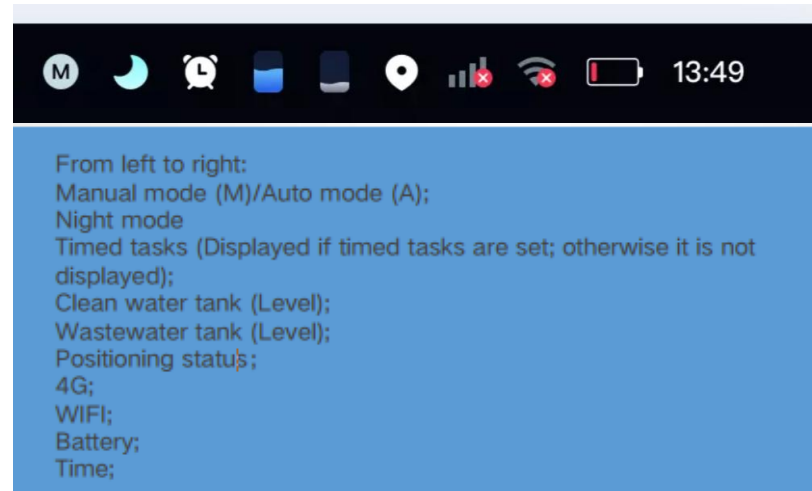
You can also ask the robot to go back to the charging dock, workstation or a specific spot with a simple click.



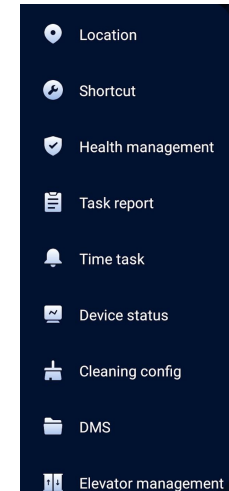
Built-in GMIND APP Introduction



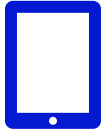
Common interaction mode as smart phones, you can **swipe downwards** to check out the shortcut menu.



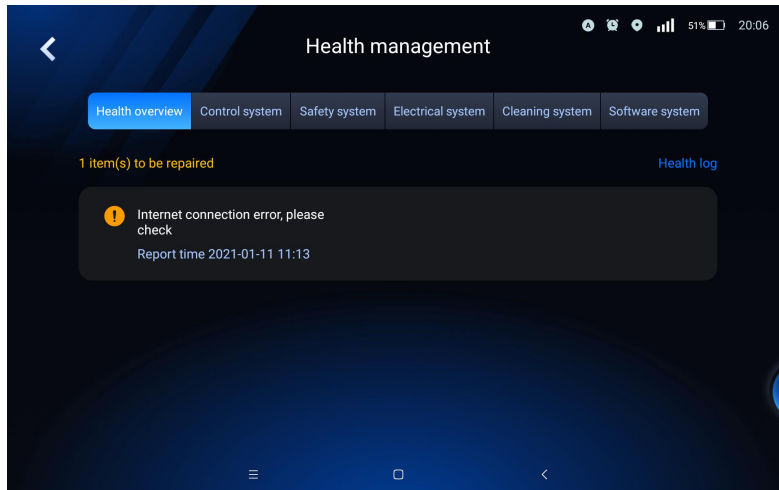
Status bar also indicates a lot of **information**, so you can basically know everything by a glance.



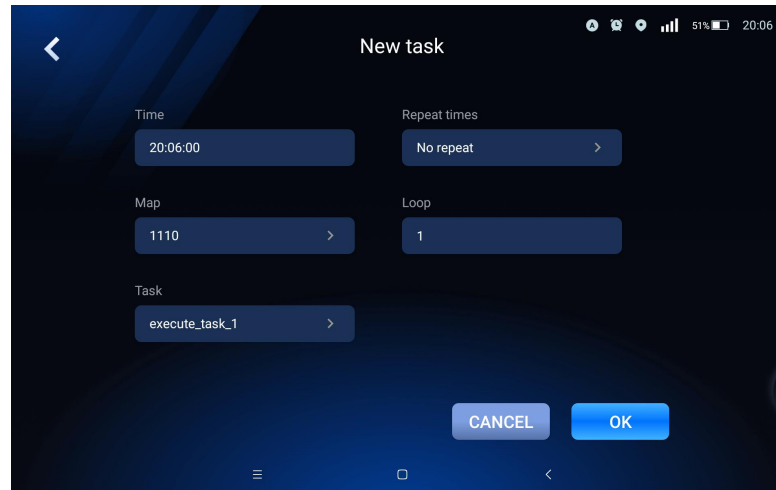
With the **sidebar**, you can check out for more professional configurations.



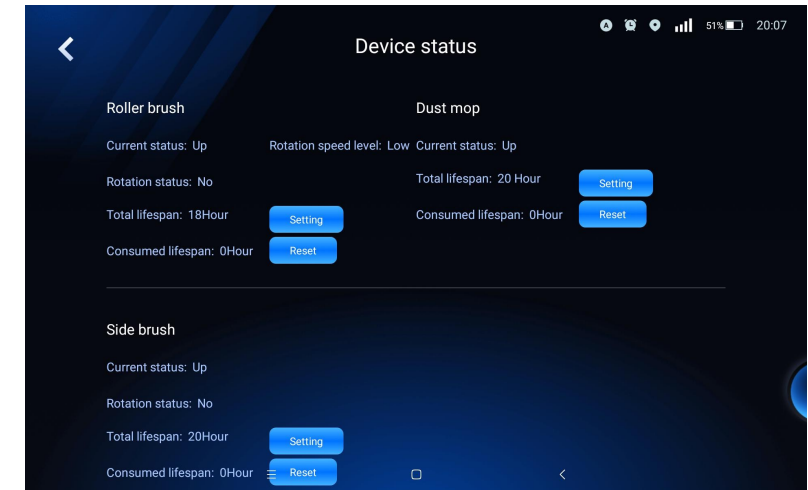
Built-in GMIND APP Introduction



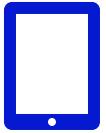
Health management allows you to check all the alarms or warnings.



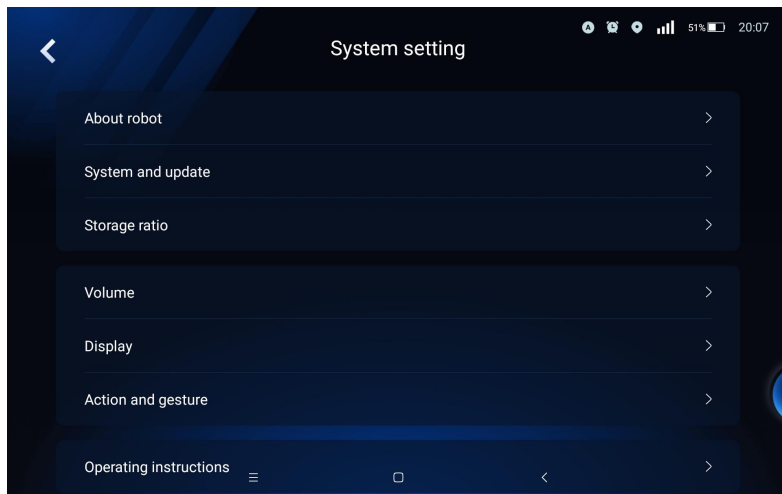
You can even set up scheduled tasks, so you do not have to start the task at midnight.



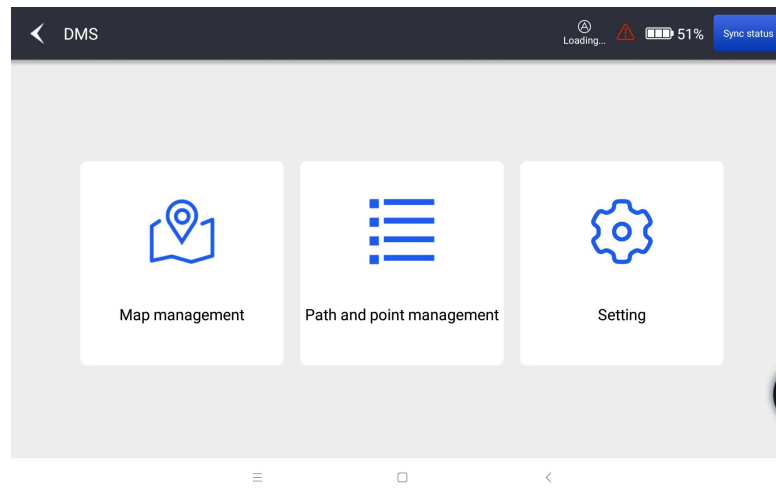
You can view the status of remaining service life and usage time of all the consumables, so you know when to replace



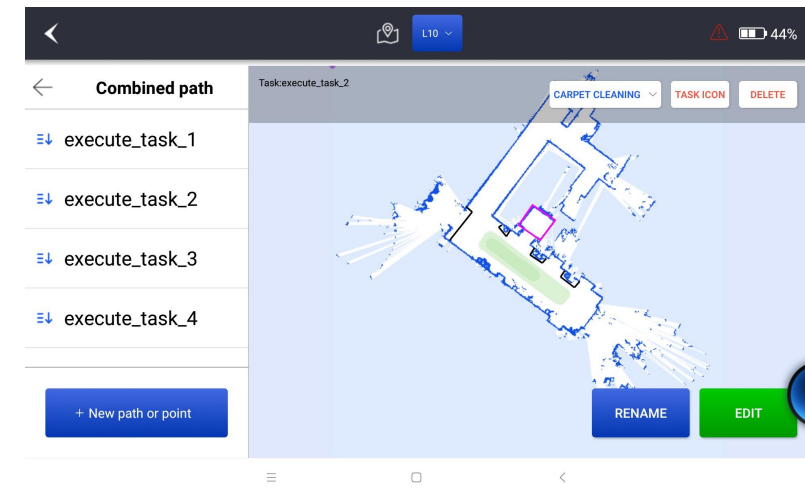
Built-in GMIND APP Introduction



This module is designed for you to check out back information about robot, and update software, adjust some back parameters of robot.



Data management part is accessible to admin account only, so admin account can edit maps, paths and some settings.



You can see a list of maps, paths easily, add new path or points easily.

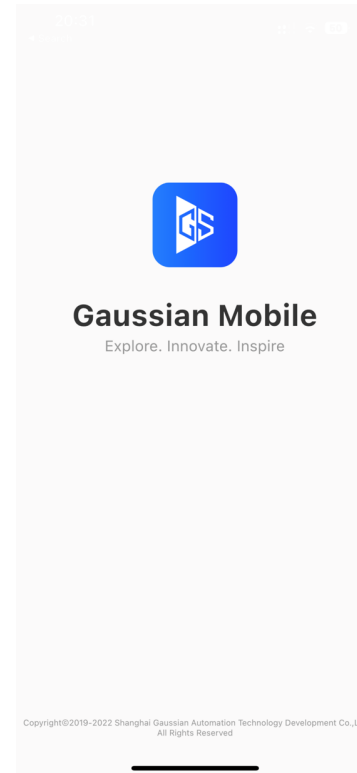
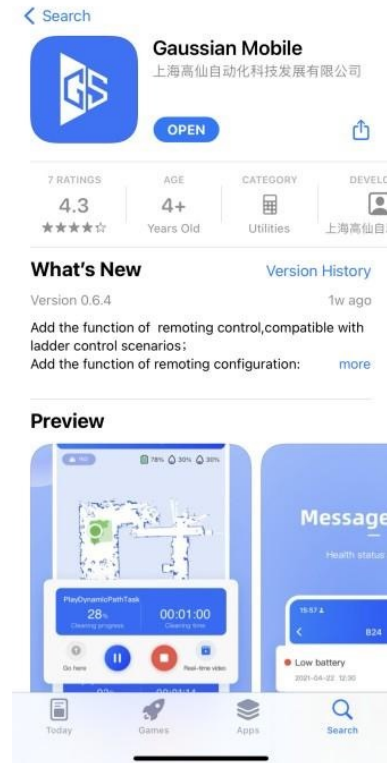


Mobile APP Introduction – Gaussian Mobile



You can download from:

1. IOS: App store,
2. Android: Google Play
3. Search “Gaussian mobile”.



Feature Highlights:

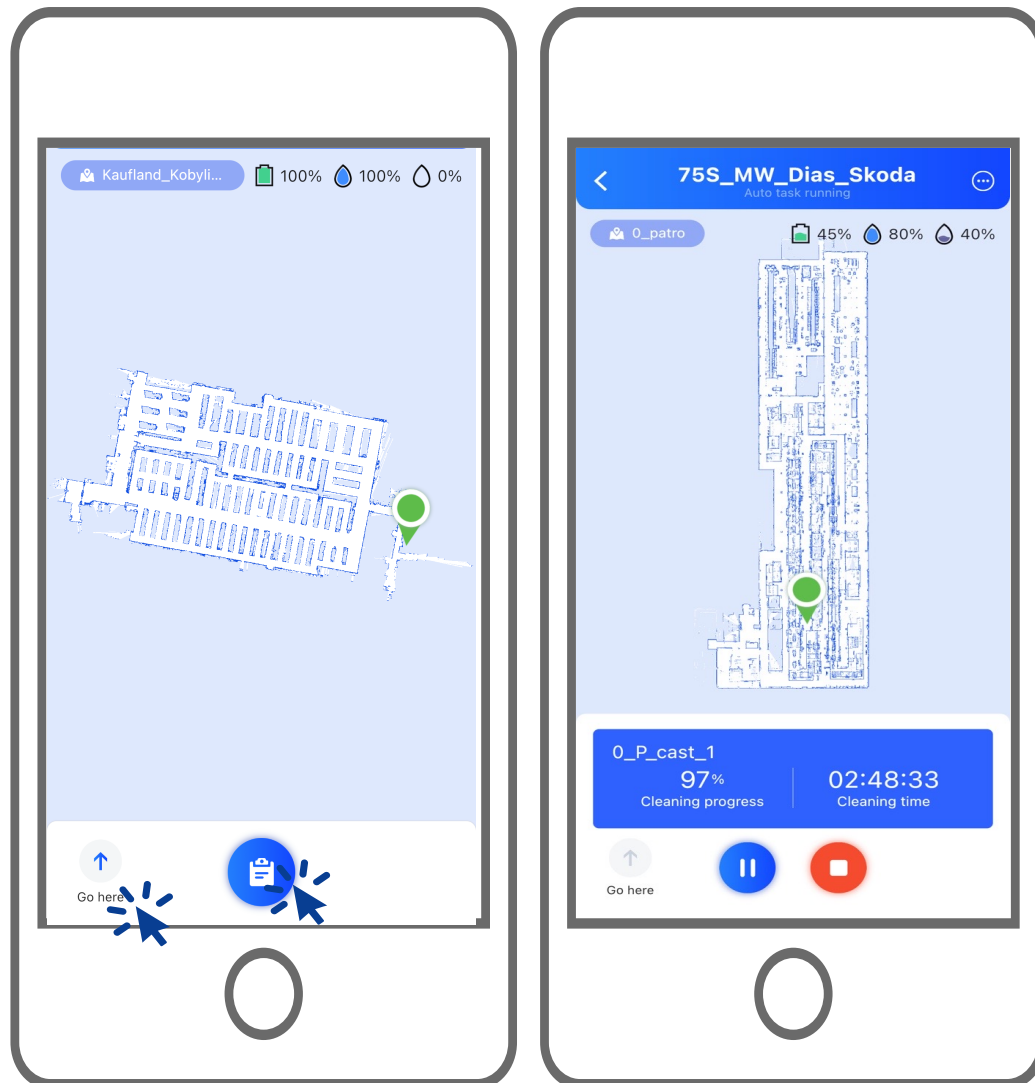
1. Remote Control
2. Manage all your robots
3. Check up on cleaning reports
4. Receive alarms & messages
5. Find your robot's location
6. Robot operation guide
7. Bind your robots

Basic function:

1. Log into your account
2. Reset password
3. Change language / Unit according to your regions



Mobile APP Introduction – Gaussian Mobile



Feature Highlights:

- ← 1. Remote Control
- 2. Manage all your robots
- 3. Check up on cleaning reports
- 4. Receive alarms & messages
- 5. Find your robot's location
- 6. Robot operation guide
- 7. Bind your robots

You can remotely start, pause, end task remotely. Or even ask the robot to go to a specific preset point by clicking “go here” icon.



Mobile APP Introduction – Gaussian Mobile



Feature Highlights:

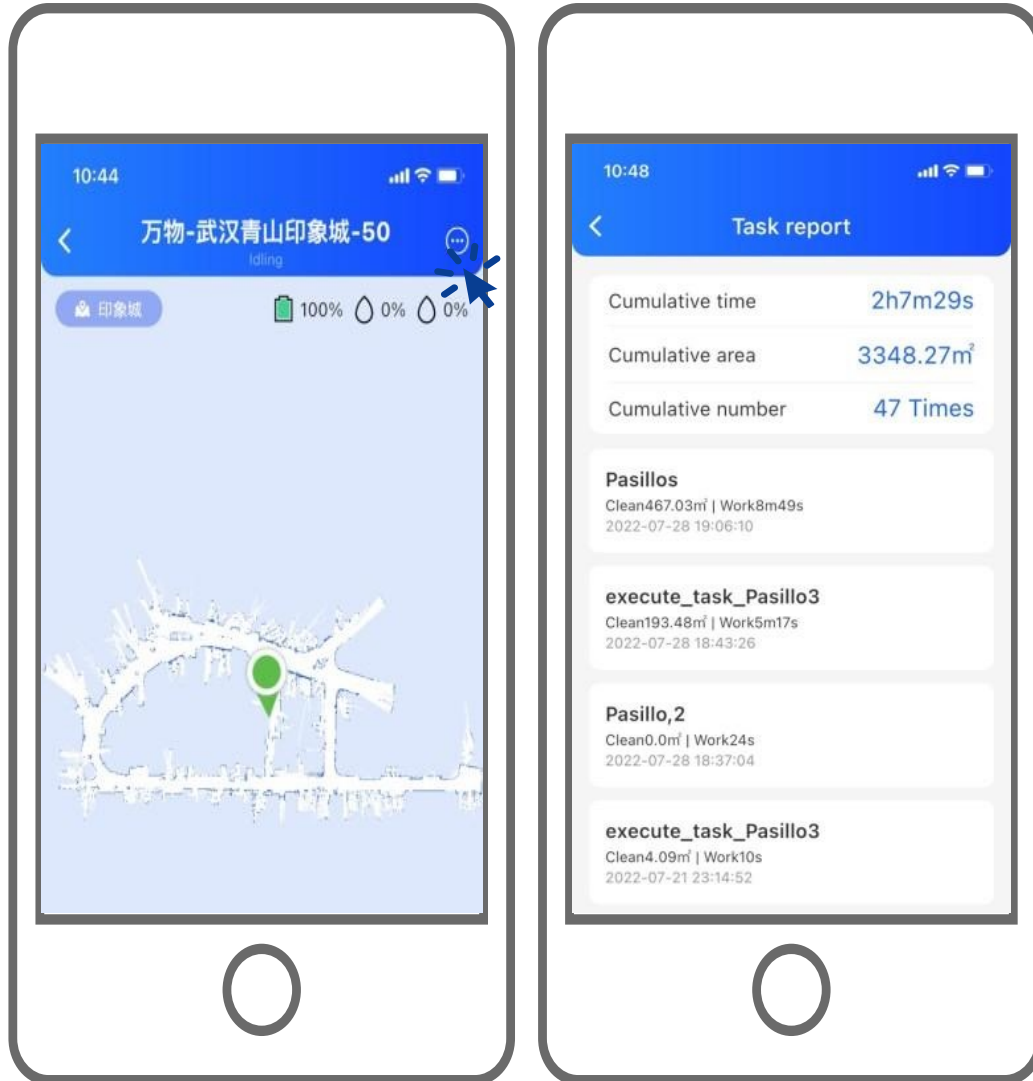
1. Remote Control
2. **Manage all your robots**
3. Check up on cleaning reports
4. Receive alarms & messages
5. Find your robot's location
6. Robot operation guide
7. Bind your robots



You can manage all your robots under your account, click “Online” to check all the online robots or click “Offline” to see which robots are offline.



Mobile APP Introduction – Gaussian Mobile



Feature Highlights:

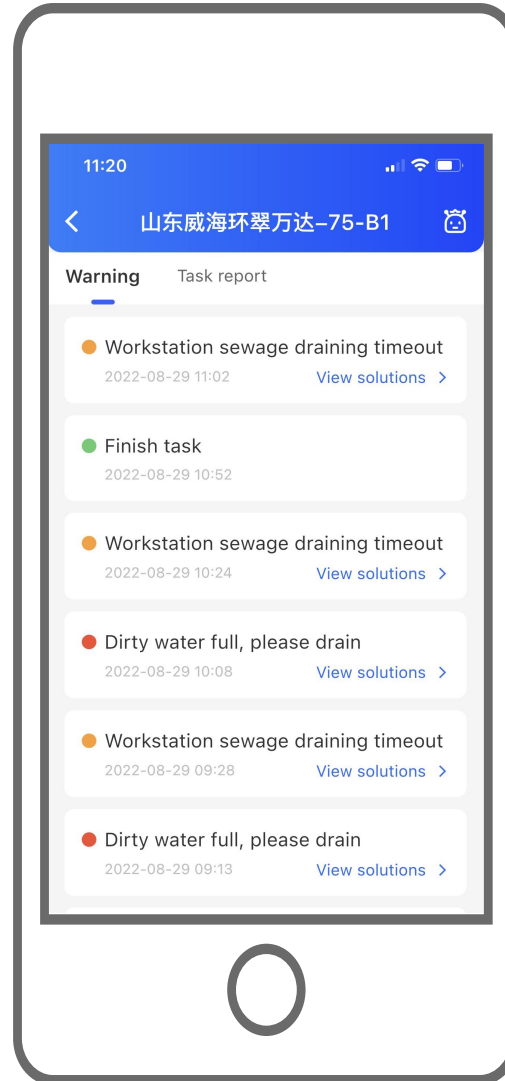
1. Remote Control
2. Manage all your robots
3. **Check up on cleaning reports**
4. Receive alarms & messages
5. Find your robot's location
6. Robot operation guide
7. Bind your robots



Find a robot, tap the icon at the right-upper corner, then you can see all task reports of it, including cumulative operation time, area and number of tasks.



Mobile APP Introduction – Gaussian Mobile



Feature Highlights:

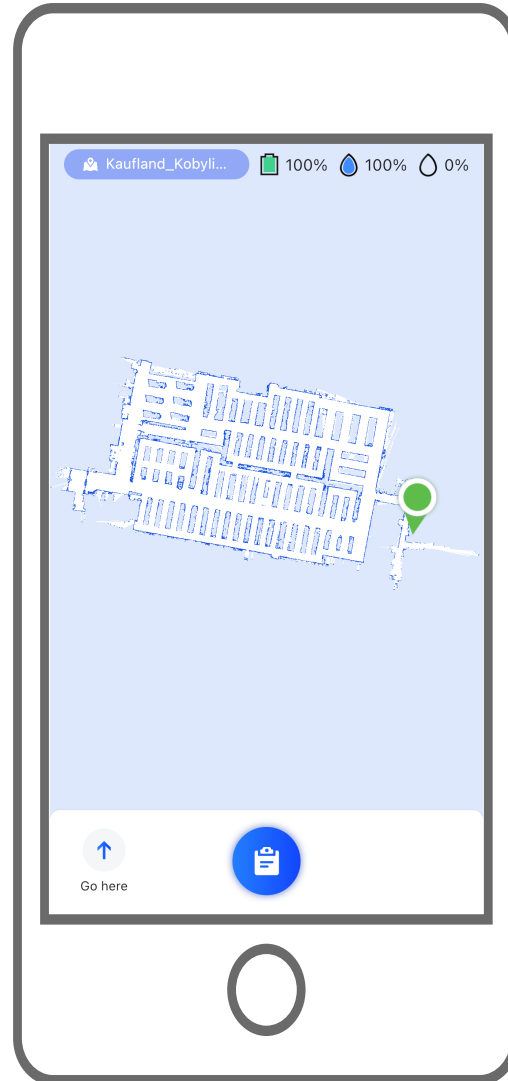
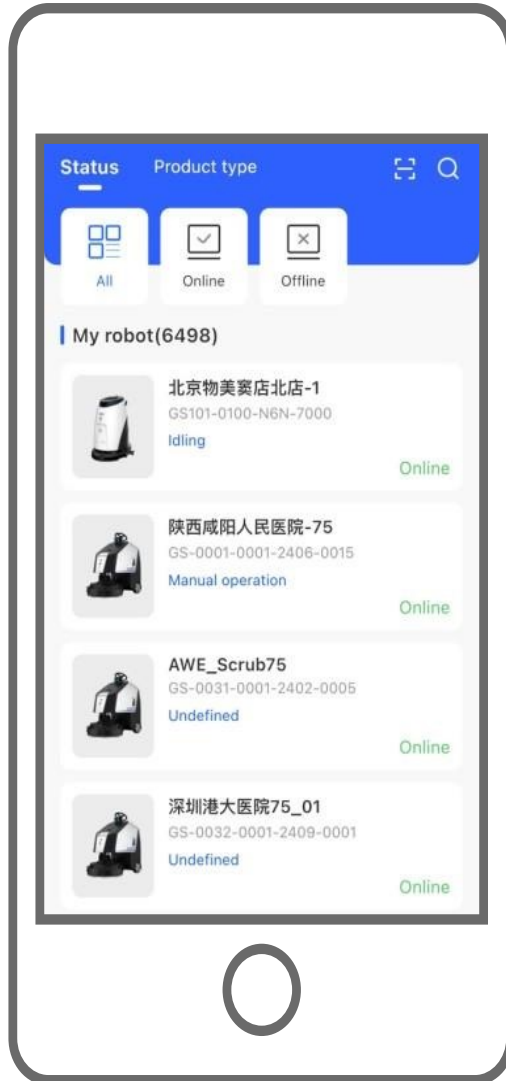
1. Remote Control
2. Manage all your robots
3. Check up on cleaning reports
- 4. Receive alarms & messages**
5. Find your robot's location
6. Robot operation guide
7. Bind your robots



You can receive alarms or messages as notifications, including error messages, reminds of task status, etc.



Mobile APP Introduction – Gaussian Mobile



Feature Highlights:

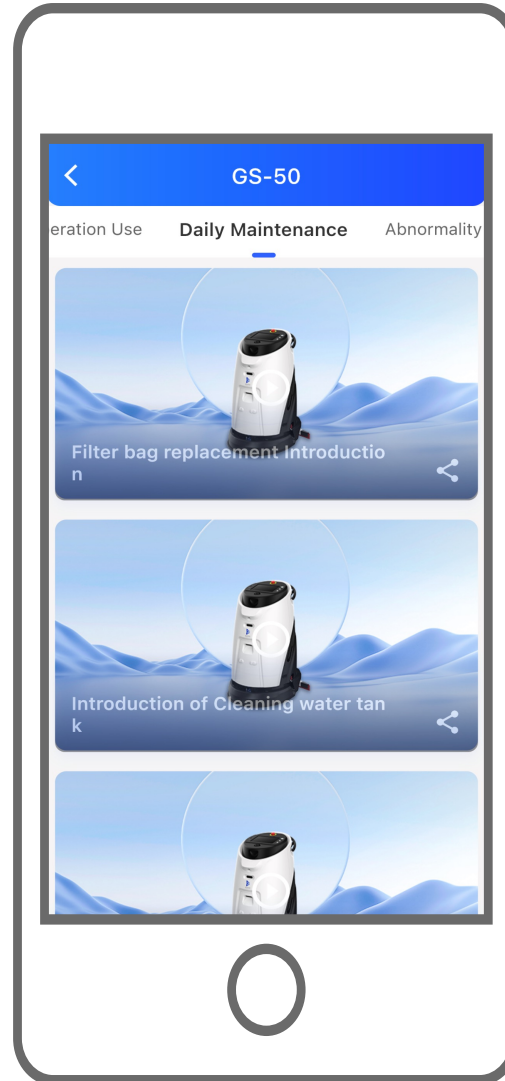
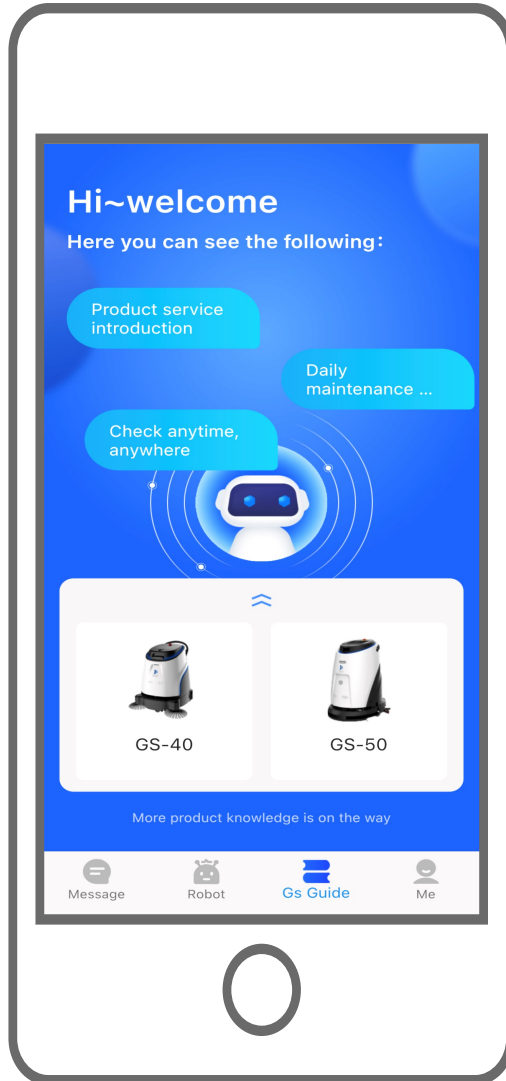
1. Remote Control
2. Manage all your robots
3. Check up on cleaning reports
4. Receive alarms & messages
5. **Find your robot's location**
6. Robot operation guide
7. Bind your robots



When the area is too big to find robot's location, you can find its relative location on the map, which helps you save time.



Mobile APP Introduction – Gaussian Mobile



Feature Highlights:

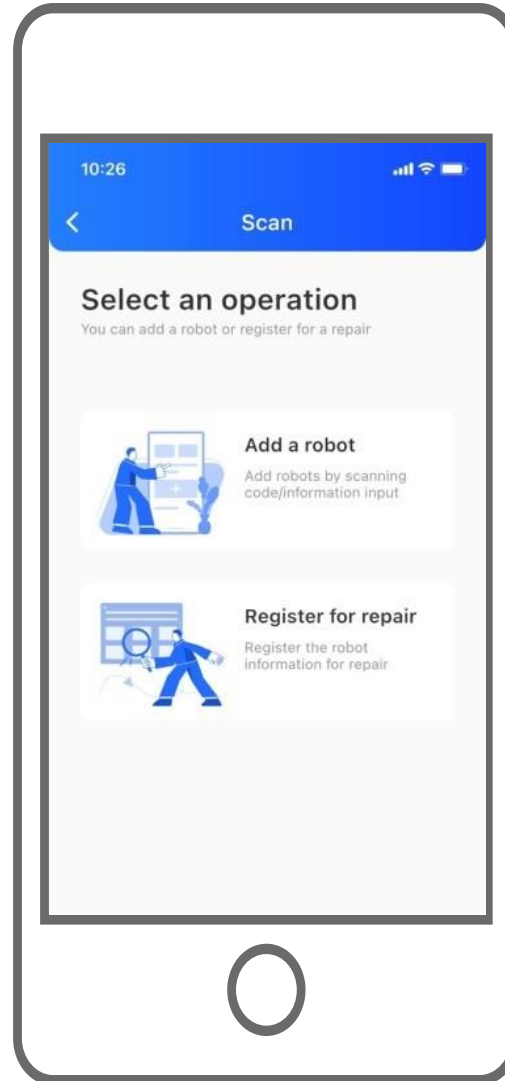
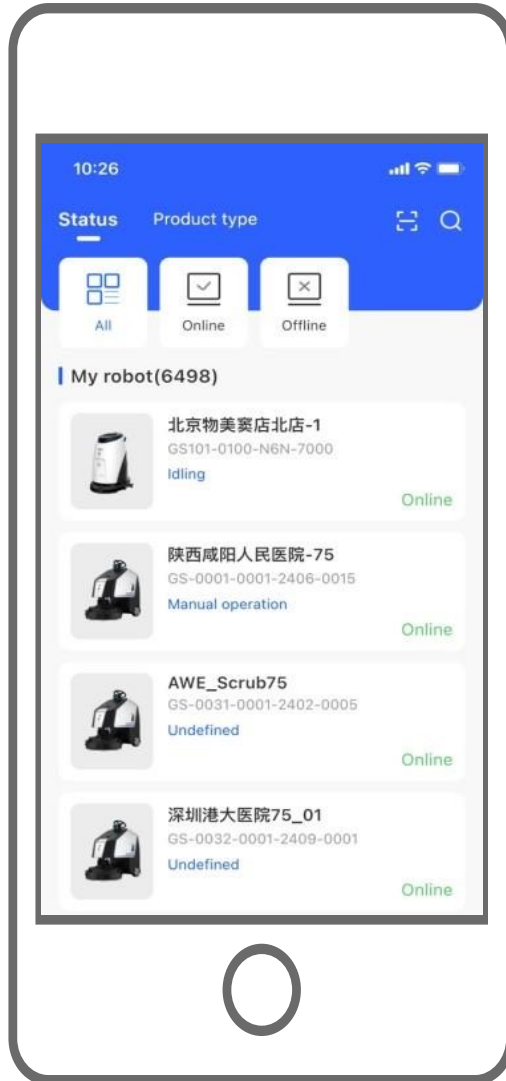
1. Remote Control
2. Manage all your robots
3. Check up on cleaning reports
4. Receive alarms & messages
5. Find your robot's location
- 6. Robot operation guide**
7. Bind your robots



We also provide many videos for your reference, including “product introduction”, “operation use”, “daily maintenance”, “malfunction handling”.



Mobile APP Introduction – Gaussian Mobile



Feature Highlights:

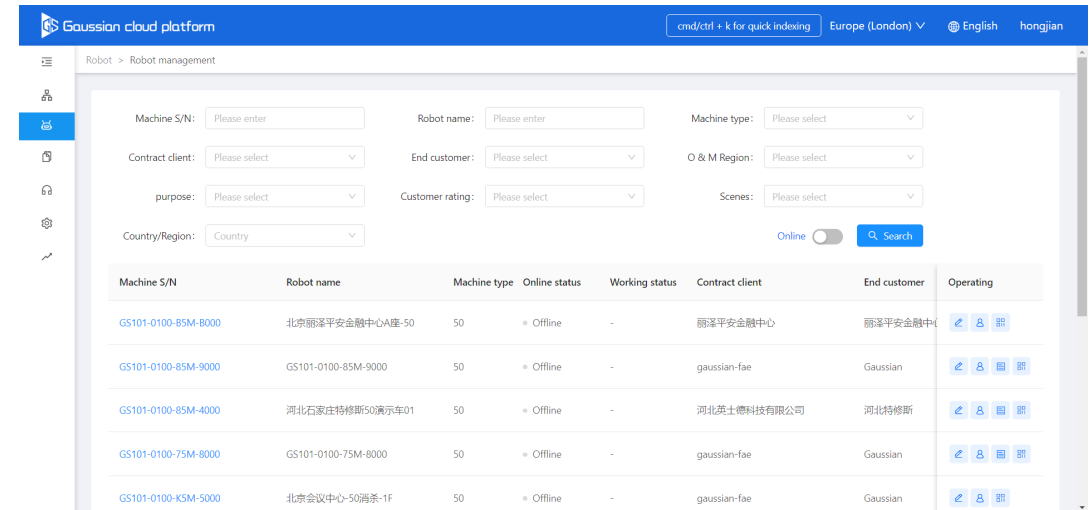
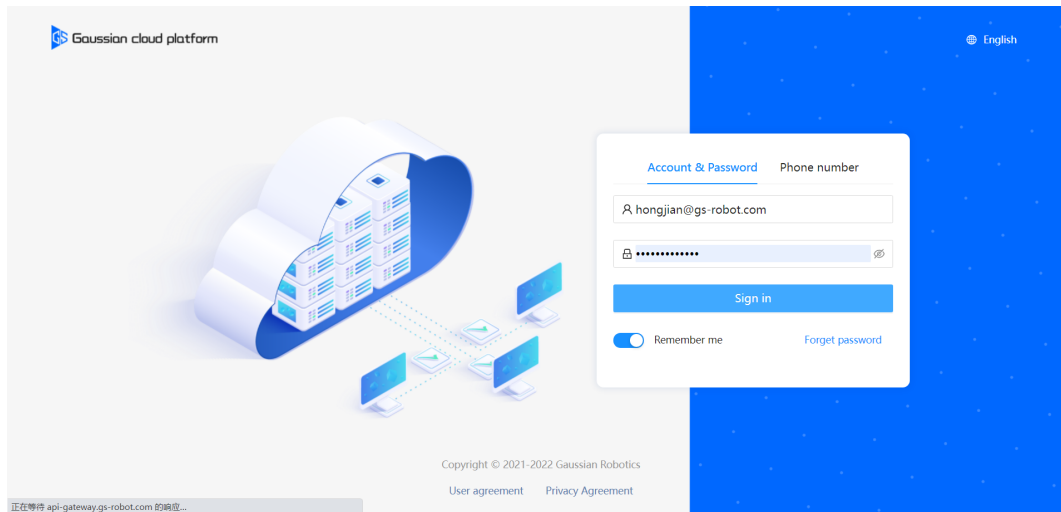
1. Remote Control
2. Manage all your robots
3. Check up on cleaning reports
4. Receive alarms & messages
5. Find your robot's location
6. Robot operation guide

← 7. Bind your robots

You can scan the QR code, or manually input the S/N of a robot, to add and link it to your account, then you can see it is in the list.



Cloud Platform Introduction

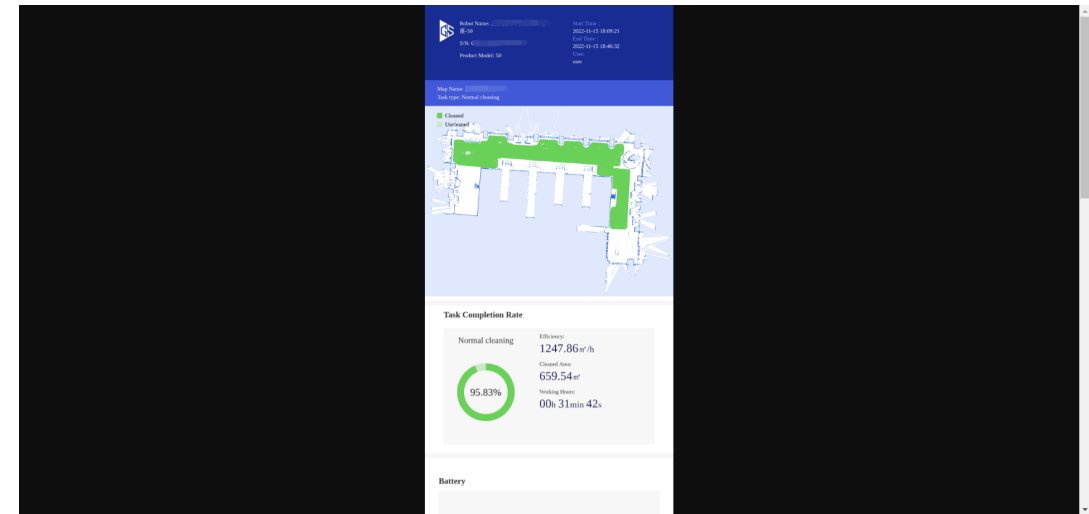
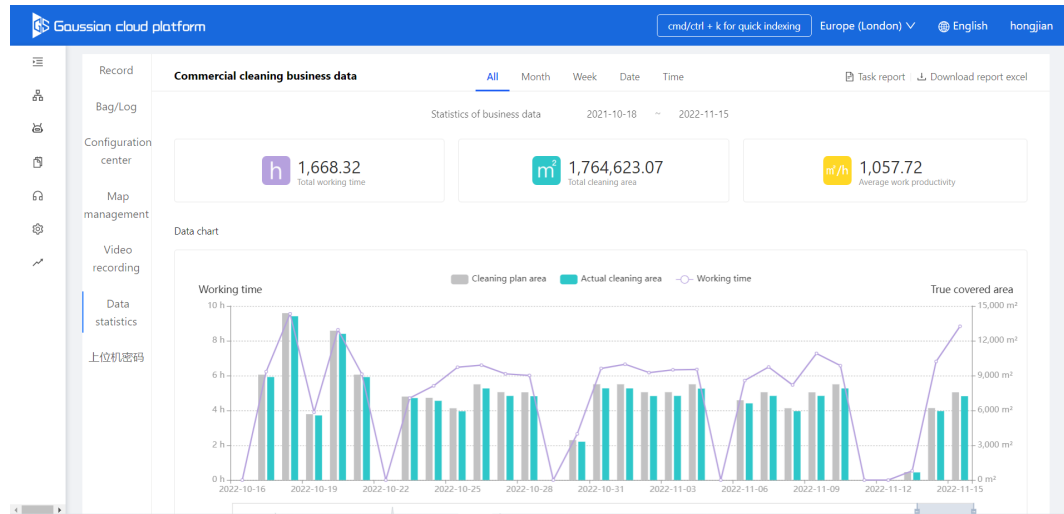


Cloud platform access portal:
<https://cloud.gs-robot.com/#/robot/manager>

You can see all the robot under your account, or search any of them by inputting several conditions.



Cloud Platform Introduction



You can check up on more **detailed statistics** according to month, week, date or a timespan. You can either click “download report excel” to see a report summary.

Or you can also click “**task report**” to see a specific task report.



Cloud Platform Introduction



The screenshot shows the 'Event subscription' settings in the Gaussian cloud platform. It features a table with columns for Event code, Event name, Event level, Event total switch, Email switch, and Gmind mobile switch. The 'Event total switch' column has a green toggle switch, while the 'Email switch' and 'Gmind mobile switch' columns have grey toggle switches. The table lists seven event codes with their corresponding names and levels.

| Event code | Event name | Event level | Event total switch | Email switch | Gmind mobile switch |
|------------|---|-------------|-------------------------------------|--------------------------|-------------------------------------|
| 10001 | Float ball of clear water tank is abnormal, please check if the float ball is stuck | H3 | <input checked="" type="checkbox"/> | <input type="checkbox"/> | <input type="checkbox"/> |
| 10002 | Float ball of dirty water tank is abnormal, please check if the float ball is stuck | H6 | <input checked="" type="checkbox"/> | <input type="checkbox"/> | <input checked="" type="checkbox"/> |
| 10003 | Drive warning: Filter motor overload, please replace the filter | H5 | <input checked="" type="checkbox"/> | <input type="checkbox"/> | <input checked="" type="checkbox"/> |
| 10004 | Steering potentiometer and encoder calibration error | H5 | <input checked="" type="checkbox"/> | <input type="checkbox"/> | <input checked="" type="checkbox"/> |
| 10005 | Left encoder exceeds speed limit, please check | H5 | <input checked="" type="checkbox"/> | <input type="checkbox"/> | <input checked="" type="checkbox"/> |
| 10006 | Right encoder exceeds speed limit, please check | H5 | <input checked="" type="checkbox"/> | <input type="checkbox"/> | <input checked="" type="checkbox"/> |
| 10007 | Front-wheel encoder exceeds speed limit | H5 | <input checked="" type="checkbox"/> | <input type="checkbox"/> | <input checked="" type="checkbox"/> |

Event subscriptions: you can also decide which kind of event would you like to receive in which way (email or mobile), and you can switch off some of them if you do not need.

The screenshot shows the 'Robot configuration table' in the Gaussian cloud platform. It features a table with columns for Robot S/N, Robot name, Task report mail switch, and Task report mobile terminal switch. The 'Task report mail switch' column has a green toggle switch, while the 'Task report mobile terminal switch' column has a grey toggle switch. The table lists seven robots with their corresponding S/N numbers and names.

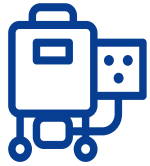
| Robot S/N | Robot name | Task report mail switch | Task report mobile terminal switch |
|---------------------------|------------------------|-------------------------------------|------------------------------------|
| GS-0001-0001-2406-0015 | 陕西咸阳人民医院-75 | <input type="checkbox"/> | <input type="checkbox"/> |
| GS-0038-0001-2411-0003 | 重庆龙湖时代天街-10号机 | <input type="checkbox"/> | <input type="checkbox"/> |
| GS-0038-0001-2501-0005 | Kastell_75_001_KASTELL | <input checked="" type="checkbox"/> | <input type="checkbox"/> |
| GS-AS-0000-0006-0030-0317 | Kastell_50_001_KASTELL | <input checked="" type="checkbox"/> | <input type="checkbox"/> |
| GS-AS-0000-0006-0030-0319 | 50马桥-01-34版-1楼大厅 | <input type="checkbox"/> | <input type="checkbox"/> |
| GS057-0170-43N-000L | 捷克 | <input type="checkbox"/> | <input type="checkbox"/> |
| GS100-0010-65M-6000 | GS100-0010-65M-6000 | <input type="checkbox"/> | <input type="checkbox"/> |

Task report subscriptions: you can also decide which way to receive task reports from which robots.

Contents



1. Basic Information
2. Applicable Scenarios
3. Software and cloud platform
4. Accessories (Charging dock & Workstation)
5. Product Advantages and Values
6. Demos
7. Success case



Accessories



SC50 Pro



Charging Dock

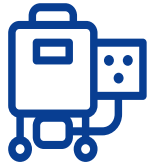


**Workstation
(V1.2 & V2.0)**

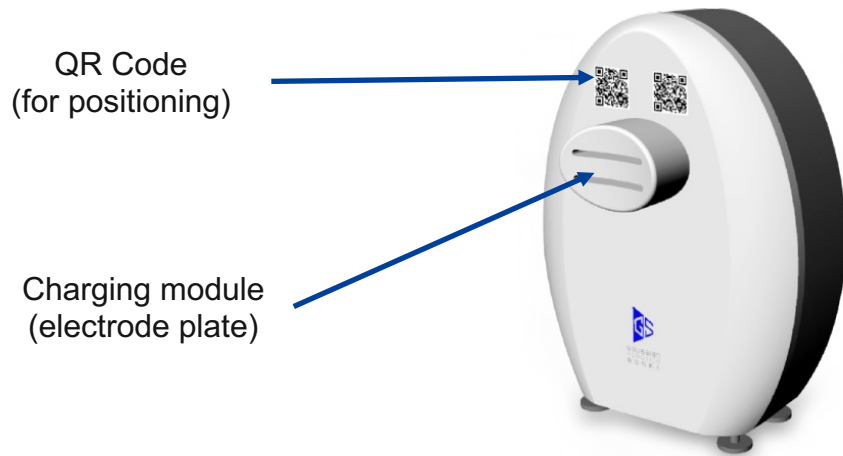
When the battery reaches the low threshold, robots can automatically go to the charging dock to recharge.

The robots can go to the workstation to recharge, refill fresh water, drain the dirty water if any of these conditions is met:

1. Battery is less than 10%
2. Clean water tank is empty
3. Dirty water tank is full



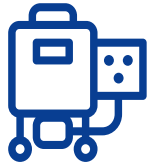
Accessories



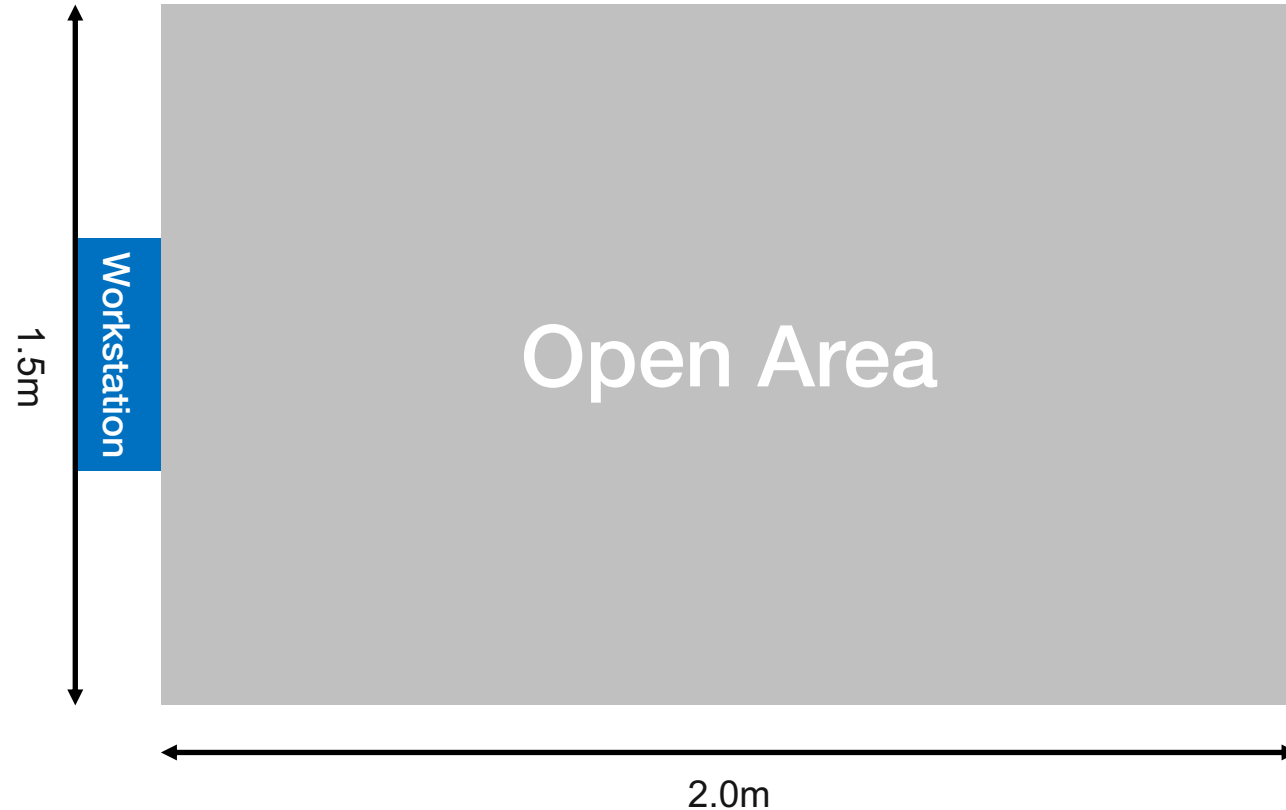
Charging Dock



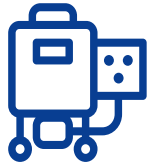
Workstation (V2.0)



Installation Condition - Workstation



To ensure SC50 Pro can dock to the charging dock or workstation, we need a space of at least 1.5*2.0m in front of where the charging dock or workstation is installed, make sure the ground is flat without any potholes, bumps or reflective materials (like glass).



Solutions without or with Accessories



SC50 Pro



Full water tank can clean (filtration system on): 2000-4000 sqm*(scrubbing mode)

Full battery can clean

1. 2.5-3h* (scrubbing mode, 400-800 sqm/h*, 1000-2000 sqm*)
2. 8h* (mopping mode, disc brush version, 600-1200 sqm/h*, 4800-9600 sqm*)
3. 6h* (mopping mode, roller brush version, 400-800 sqm/h*, 2400-4800 sqm*)

Suitable for places with cleaning area of <1000-2000 sqm* (scrubbing)

Otherwise, human intervention should be required, cleaners need to manually recharge, refill water)

* implies the data is for reference only, it will vary in different actual situations



SC50 Pro



Charging Dock



With charging dock (When the battery reaches the low threshold, robots can automatically go to the charging dock to recharge):

It can prolong the battery life until:

1. The clean water tank is empty (full water tank can clean: 2000-4000 sqm*, scrubbing mode, the data is for reference only)
2. The dust mop needs to be replaced (mopping mode)

Suitable for places with power supply (but without water supply and drainage system), to enable robot to cover:

2000-4000 sqm* (scrubbing)

Otherwise, cleaners need to manually refill water during tasks



SC50 Pro



Workstation



With workstation (When the battery reaches the low threshold, or clean water tank is empty, or dirty water tank is full, robots can automatically go to the workstation to recharge & refill clean water & discharge dirty water):

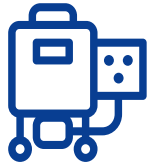
It can prolong the cleaning time until:

1. The robot needs maintenance after daily use.

Suitable for places with power supply, water supply and drainage system, to enable robot to cover:

>4000 sqm* (scrubbing)

Human intervention will be only needed for once per day (daily maintenance)



Accessories - Demo



Contents



1. Basic Information
2. Applicable Scenarios
3. Software and cloud platform
4. Accessories (Charging dock & Workstation)
5. Product Advantages and Values
6. Demos
7. Success case



Product Advantages & Values



▶ 01

Saving Labor Cost

▶ 02

Improving Efficiency

▶ 03

Cleaning Effect Improvement

▶ 04

Brand Promotion



Product Advantages & Values - Co-botic solution



Productivity Improvement
Cleaning Effect Improvement
Brand Promotion

We need people to do the 20% work as shown below:

1. Flexible cleaning, like ceilings, corners;
2. Maintenance for robots;
3. Manual assistance for robot;
4. Pre-sweeping for big trash.

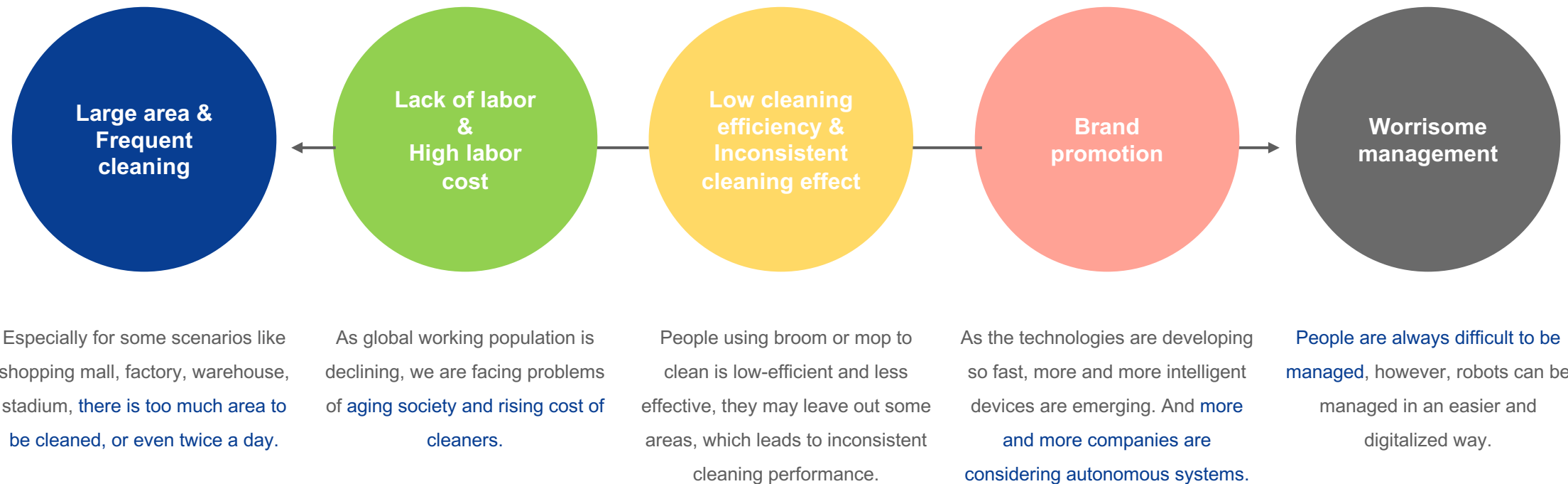
Robots can clean 80% area repetitively with high efficiency and long runtime.



Product Advantages & Values – Pain Points



What pain points we can resolve and what requirements we can meet?





Product Advantages & Values – Our Values



What values we can offer?

SC50 Pro can clean in an autonomous and intelligent way, no matter in terms of path planning or obstacle avoidance. It can run for 2.5-3h on a single charge, which can cover around 2000 sqm.

As what is suggested in the “co-botic solution” section, robot can help people do heavy and repetitive work, while people can do more valuable and flexible work, which eventually helps save total cost.

Robot can clean in a more effective and efficient way with 25kg down pressure to the ground to ensure cleaning performance, and with 400-800 sqm/h productivity to cover more areas.

SC50 Pro features its friendly appearance, which enables it to work during daytime if when there are some people walking around. That can promote the brand of the company since people would find it attractive and intelligent.

As what we have presented in the previous slides, you can easily use mobile app or cloud platform to manage your robots, you can either remotely control it or check up on its data anywhere, anytime.



Product Advantages & Values - Summary



Safety

Ease of Use

Data & Reporting

Dual Cleaning Modes

Cloud Connectivity

Sustainability

Contents



1. Basic Information
2. Applicable Scenarios
3. Software and cloud platform
4. Accessories (Charging dock & Workstation)
5. Product Advantages and Values
6. Demos
7. Success case



Demos





Demos



Contents



1. Basic Information
2. Applicable Scenarios
3. Software and cloud platform
4. Accessories (Charging dock & Workstation)
5. Product Advantages and Values
6. Demos
7. Success case



Success case - Supermarket & Shopping Mall



K-mart (Finland)



Carrefour (French)



M&S (UK)



Success case - Hospital



Ipswich Hospital (UK)



Rabin Medical Center (Israel)



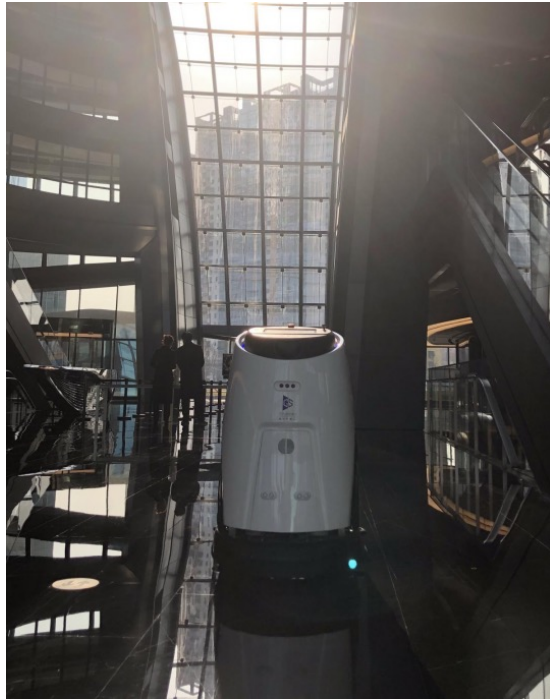
Success case – Warehouse



ICE Warehouse (UK)



Success case – Transportation



Stansted Airport railway station (UK)



St Pancra Station (UK)



Luton Airport (UK)



Success case – Stadium



New Lippumäki Ball Sports Hall (Finland)

Tottenham Hotspur Stadium (UK)



Explore . Innovate . Inspire